



CHURCH COMPLEX WITH DAY CARE

541 Elmwood Avenue, Kansas City, Missouri



SALE PRICE: \$325,000 | 16,700 SF BUILDING

DEMOGRAPHICS

	1 mile	3 miles	5 miles
Estimated Population	22,846	76,801	180,599
Avg. Household Income	\$59,941	\$62,257	\$71,530

- 11,400 SF of community gathering space on three floors
- First floor daycare, second floor dining hall, third floor office
- 5,300 SF sanctuary hall
- Private parking for approximately 30 cars
- Deferred maintenance - Priced to sell
- Excellent opportunity for Daycare, Church, or Ghost Kitchen
- Kitchen has a functioning stove and hood

 [CLICK HERE TO VIEW MORE LISTING INFORMATION](#)

For More Information Contact:

CARSON ST. CLAIR | 816.412.7306 | cstclair@blockandco.com

DANIEL BROCATO | 816.412.7303 | dbrocato@blockandco.com

Exclusive Agents



PHOTOS

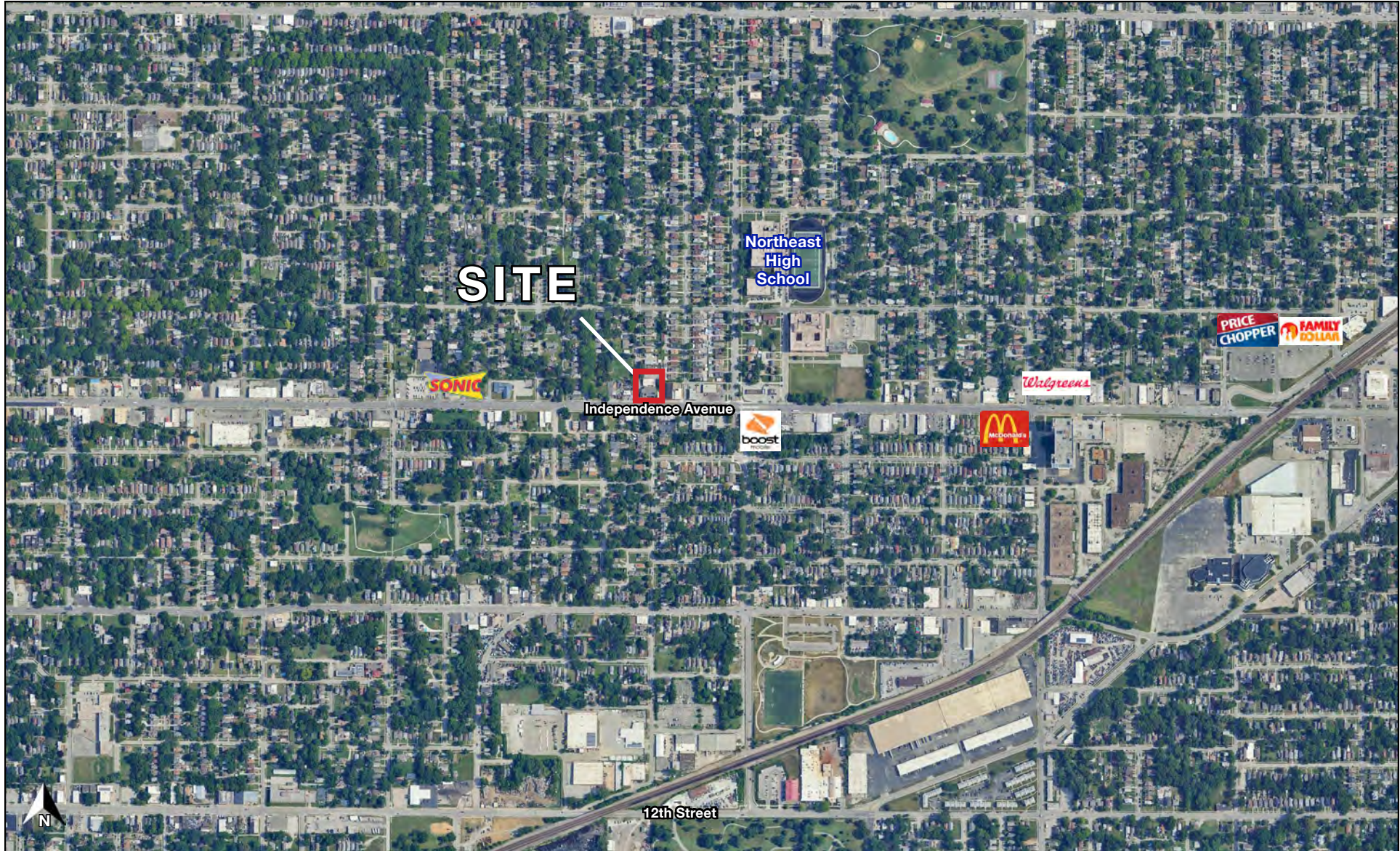




CHURCH COMPLEX WITH DAY CARE

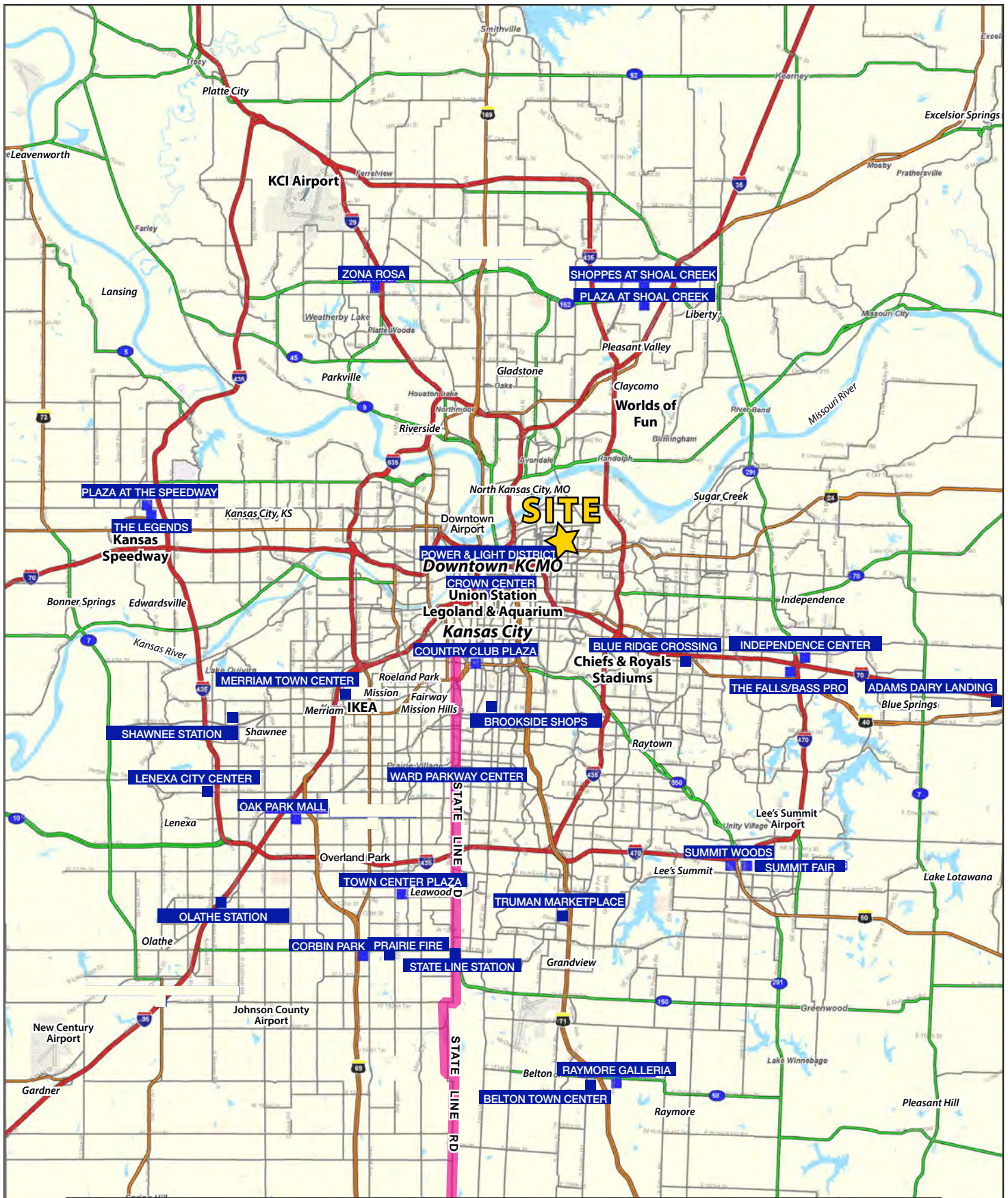
541 Elmwood Avenue, Kansas City, Missouri

AERIAL



CHURCH COMPLEX WITH DAY CARE

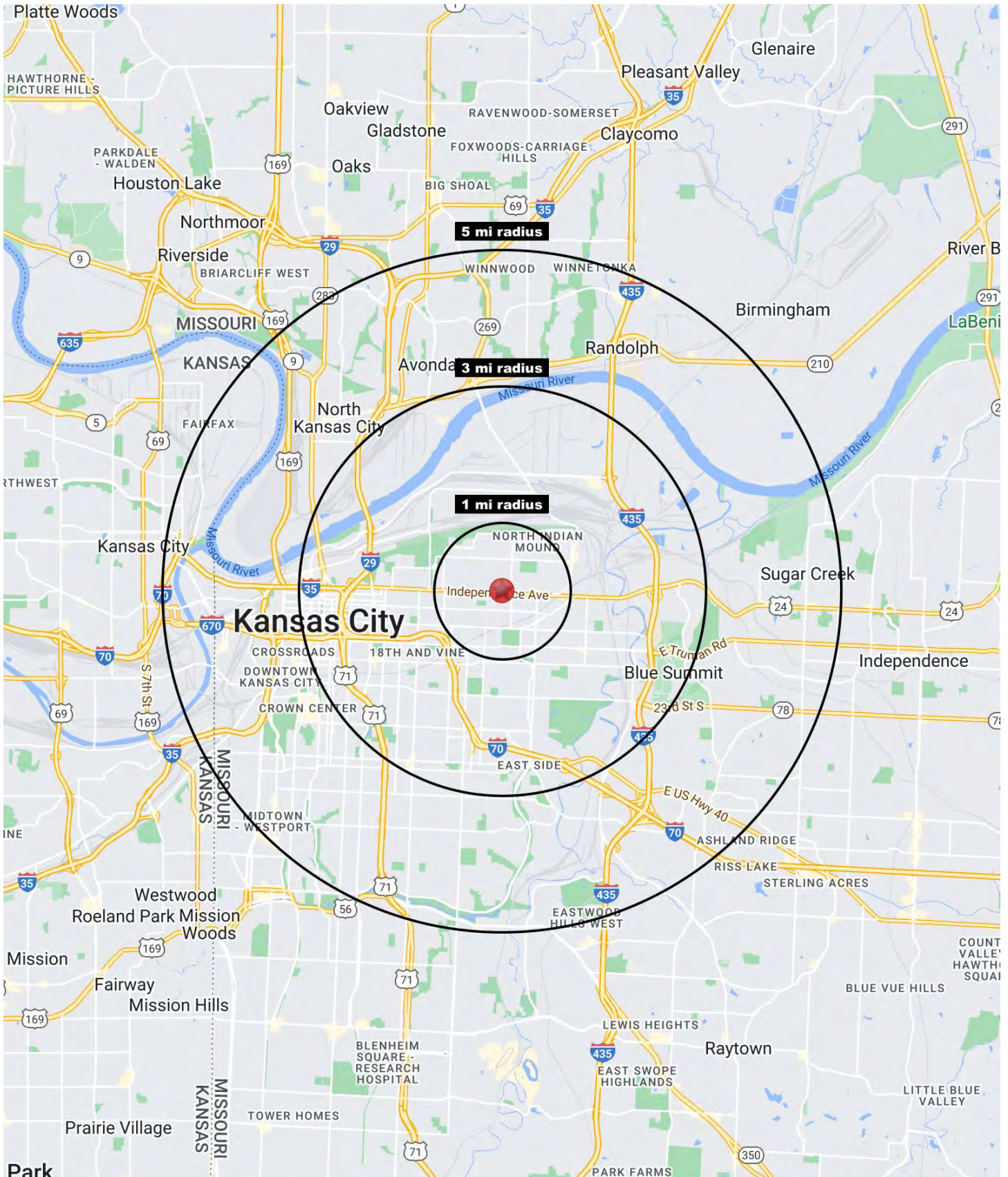
541 Elmwood Avenue, Kansas City, Missouri





CHURCH COMPLEX WITH DAY CARE

541 Elmwood Avenue, Kansas City, Missouri





CHURCH COMPLEX WITH DAY CARE

541 Elmwood Avenue, Kansas City, Missouri

541 Elmwood Avenue Kansas City, MO 64124	1 mi radius	3 mi radius	5 mi radius
Population			
2023 Estimated Population	22,846	76,801	180,599
2028 Projected Population	22,329	77,723	182,522
2020 Census Population	21,490	71,649	171,345
2010 Census Population	22,165	69,400	161,420
Projected Annual Growth 2023 to 2028	-0.5%	0.2%	0.2%
Historical Annual Growth 2010 to 2023	0.2%	0.8%	0.9%
2023 Median Age	31.9	33.0	35.1
Households			
2023 Estimated Households	7,264	29,647	79,502
2028 Projected Households	6,985	29,966	80,161
2020 Census Households	7,156	28,076	75,618
2010 Census Households	7,268	25,597	68,188
Projected Annual Growth 2023 to 2028	-0.8%	0.2%	0.2%
Historical Annual Growth 2010 to 2023	-	1.2%	1.3%
Race and Ethnicity			
2023 Estimated White	36.4%	34.5%	46.4%
2023 Estimated Black or African American	15.9%	34.4%	31.8%
2023 Estimated Asian or Pacific Islander	7.8%	4.9%	3.6%
2023 Estimated American Indian or Native Alaskan	1.3%	0.9%	0.7%
2023 Estimated Other Races	38.6%	25.3%	17.6%
2023 Estimated Hispanic	46.8%	30.0%	19.9%
Income			
2023 Estimated Average Household Income	\$59,941	\$62,257	\$71,530
2023 Estimated Median Household Income	\$44,404	\$51,370	\$57,283
2023 Estimated Per Capita Income	\$19,132	\$24,445	\$31,756
Education (Age 25+)			
2023 Estimated Elementary (Grade Level 0 to 8)	12.3%	8.9%	5.5%
2023 Estimated Some High School (Grade Level 9 to 11)	12.5%	11.6%	9.1%
2023 Estimated High School Graduate	34.9%	31.6%	30.2%
2023 Estimated Some College	17.8%	19.7%	19.8%
2023 Estimated Associates Degree Only	6.3%	6.8%	6.9%
2023 Estimated Bachelors Degree Only	9.2%	13.7%	18.2%
2023 Estimated Graduate Degree	7.0%	7.8%	10.4%
Business			
2023 Estimated Total Businesses	423	4,080	10,996
2023 Estimated Total Employees	3,377	58,187	156,591
2023 Estimated Employee Population per Business	8.0	14.3	14.2
2023 Estimated Residential Population per Business	54.0	18.8	16.4

©2024, Sites USA, Chandler, Arizona, 480-491-1112 Demographic Source: Applied Geographic Solutions 11/2023, TIGER Geography - RS1